

INDUSTRIAL

CARRYALL  
ALWAYS TOUGH, ALWAYS READY

Utility vehicles for every job. Whether you're moving a crowd, a crew, or a heavy load of equipment, Club Car has rugged and versatile utility vehicles (UTVs) to get the job done.

Club Car



3 **CARRYALL 1700**

4 **CARRYALL 1500**

6 **CARRYALL  
700/500/100**

8 **CUSTOMIZATION  
& DURABILITY**

10 **OPTIONS &  
ACCESSORIES**

## **UNMATCHED VERSATILITY, EXCEPTIONAL RELIABILITY**

The only utility vehicle that can keep up with you.

You rely on your work vehicle to perform day in and day out, on task after task, with little maintenance, even less attention, and zero headaches. Because we understand that, Carryall® by Club Car is designed, developed, and engineered to enable your best work with ease, positioning you and your organization—along with everyone it serves—for success.

Built to exacting standards with automotive-grade strength, industry-leading longevity, and a customizable design, it's the first and best choice for hardworking doers everywhere.



**1700**





## CARRYALL 1700

### **POWERFUL HAULING FOR YOUR WHOLE TEAM**

Automatic four-wheel drive vehicle with room for up to four people and all their gear.

POWER	CAPACITY	SPEED	SEATS
Kawasaki® 20.1 hp (15.0 kW) gas	1600 lb (726 kg)	25 mph (40 kph)	4
Kubota® 20.0 hp (15.0 kW) diesel			



## 1,000 JOBS, ONLY ONE CARRYALL

Things can get rocky out there. Team members come and go. Budgets fluctuate. Responsibilities expand. But the one-and-only Carryall® utility vehicle remains a constant. It keeps on working, day in and day out: hauling cargo, transporting crews, saving time and money. And now it's more reliable and versatile than ever. By combining leading-edge innovations with traditional quality, the Carryall UTV is the one utility vehicle that can tackle 1,000 jobs. It stands alone.



### CARRYALL 1500

#### ALL-AROUND HIGH-PERFORMANCE MACHINE

The perfect combination of muscle and flexibility packed on a rustproof, aircraft-grade aluminum frame.

POWER	CAPACITY	SPEED	SEATS
Kawasaki® 20.1 hp (15.0 kW) gas	1450 lb (658 kg) 1900 lb (862 kg)	19 mph (31 kph)	2

## REDESIGNED FROM THE GROUND UP

Our 2- and 4-passenger 4x4 cabs for Carryall provide greater overall comfort, safety, protection from the elements, and performance.







RTV 1500

**1500**





## TANK-LIKE DURABILITY, TRUCK-LIKE PERFORMANCE

These vehicles are in it for the long haul.

Carryall® utility vehicles are known for delivering years of trouble-free service. The new vehicles continue that tradition. They retain the core components users prize in the Carryall brand: the rustproof, corrosion-resistant, aircraft-grade aluminum frame and body; tough ArmorFlex™ front body with automotive finish; self-compensating rack-and-pinion steering; independent front suspension system; and unparalleled reliability. But they also incorporate innovative new features and benefits that add even more value.



### CARRYALL 100

#### PACKS A PUNCH

The high-power, nimble Carryall 100 has a small profile and tight turning radius.

POWER	CAPACITY	SPEED	SEATS
14 hp (10.3 kW) Kohler EFI gas	800 lb (363 kg)	15-17 mph (24-27 kph)	2-4
13 hp (9.6 kW) peak 48-volt electric		5-17 mph (8-27 kph)	



### CARRYALL 500

#### JACK OF ALL TRADES

Versatile, rugged, the best choice for those with various tasks.

POWER	CAPACITY	SPEED	SEATS
14 hp (10.3 kW) Kohler EFI gas	1200 lb (544 kg)	15-17 mph (24-27 kph)	2
20 hp (14.9 kW) peak 48-volt electric		5-17 mph (8-27 kph)	
16 hp (11.7 kW) peak 48-volt AC electric		17 mph (27 kph)	
21.4 hp (16 kW) peak 48-volt 3-phase AC - Li-Ion		5-19 mph (8-31 kph)	



### CARRYALL 700

#### FOR THE LONG HAUL

High hauling capacity with the legendary, rugged Carryall design.

POWER	CAPACITY	SPEED	SEATS
14 hp (10.3 kW) Kohler EFI gas	1500 lb (680 kg)	15-17 mph (24-27 kph)	2
20 hp (14.9 kW) peak 48-volt electric		5-17 mph (8-27 kph)	
16 hp (11.7 kW) peak 48-volt AC electric		17 mph (27 kph)	
21.4 hp (16 kW) peak 48-volt 3-phase AC - Li-Ion		5-19 mph (8-31 kph)	



**COMPACT  
DESIGN,  
FULL-SIZE  
PERFORMANCE**

At a smaller size,  
the Carryall 100  
easily maneuvers  
through tight paths  
and spaces.



**100**

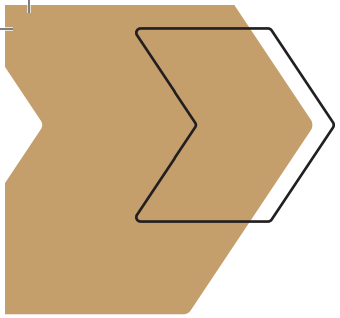


**500**



**700**





# CARRYALL

## **OUTFITTED FOR THE TASK AT HAND**

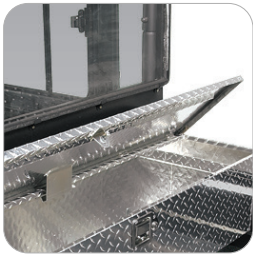
Carryall UTVs are built to your needs.

No team ever has just one job to do—it's a series of tasks with different needs for each. With the industry's widest range of commercial accessories, such as ladder racks, refreshment centers, specialized lighting, and more, we can customize your new Club Car with application-specific features to improve productivity.



## **OPTIONS & ACCESSORIES**

More accessories are available. Ask your Club Car sales representative for details.



Aluminum Locking Tool Box



5-Panel Rear View Mirror



Canopy/Windshield



USB Port



Strobe Light



Rear Receiver Hitch



## ***ALUMINUM FRAME FOR LONGER LIFE***

While most utility vehicles are built on a steel frame, Club Car features automotive-grade aluminum frames. Our frames are strong, rustproof, and impact resistant to enhance overall performance and prolong the life of your vehicle.







## **CUSTOMIZED FOR PRODUCTIVITY**

Specialized add-ons make getting the job done easier.

Vehicles accessorized for your team's specific tasks lead to smoother, more efficient workdays. With a wide range of standard and unique commercial accessories, you can outfit your Carryalls exactly how you want to put the most frequently used tools front and center. Here are just a few of the options:

- LED headlights that last 50 times longer than traditional lights
- Ladder racks, tool boxes, van boxes, stake sides, dump kits, and more
- Cabs, enclosures, heaters, fans, and other equipment that can turn your vehicles into year-round assets

### **VERSATTACH™ OPTIONS & ACCESSORIES**

More accessories are available. Ask your Club Car sales representative for details.



Bed-Mounted Ladder Rack Kit



Backpack Blower Rack



Multi-Tool Holder Kit



Ratcheting Tool Holder Kit (Upper) & Standard Tool Holder Kit (Lower)



Bucket Holder



Tie-Down Kit



Club Car's commercial utility vehicles, from rugged 4x4s to street legal LSVs, are rugged and versatile, making them the perfect solution for industrial and commercial jobs. With a rustproof aluminum frame, chassis, and cargo box, along with best-in-class ergonomics, our UTVs are built to withstand the most extreme conditions.



**LEARN MORE AT [CARRYALL.COM](https://www.carryall.com)**





Find your local authorized Club Car dealer now,  
and take control of your fleet.

***LEARN MORE AT [CARRYALL.COM](https://www.carryall.com)***